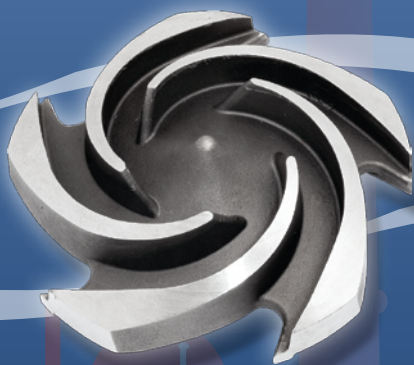




R.B. MOSHER CO.

www.rbmosherco.com



5902 FM 517 San Leon, TX 77539
Toll Free: 1-800-444-2207
Office: (281) 339-3382
Fax: (281) 559-1152
E-mail: sales@rbmosherco.com

R.B. MOSHER CO. has been in business since 1986, providing quality products and services to the Petrochemical, OEM, and Municipal Industries.



About R.B. Mosher Company

R. B. Mosher Co. is a provider of products and services to the petrochemical, oil, power and municipal industries. We serve customers in the USA and throughout the world. We have a skilled staff, offer quick delivery time, and hold a large inventory to meet your company's needs.

Our Products and Services Include:

<i>Page</i>	
<i>3 - 7</i>	<i>Pumps</i> - Centrifugal, Diaphragm & Positive Displacement; custom -built Skids, Fire Pumps, Sales, Rentals & Repairs
<i>4 - 5</i>	<i>Mosherflo ANSI Pumps</i>
<i>6 - 7</i>	<i>Mosherflo Self-Priming Pumps</i>
<i>8 - 9</i>	<i>Filters</i> - Bag & Cartridge type for liquids, Sales & Rentals
<i>10 - 11</i>	<i>Strainers</i> - Y & Basket Type; Mosherflo Duplex Basket Strainers
<i>12</i>	<i>Screens</i> - We make Custom Screens for Y & Basket Strainers
<i>13</i>	<i>Steam Traps</i> - Thermodynamic, Float & Thermostatic, and Inverted Bucket Steam Traps
<i>14</i>	<i>Valves</i> - Mosherflo Butterfly, Ball & Check; Actuators
<i>15</i>	<i>Remanufactured Pump Packages</i>

PUMPS

At R.B. Mosher Company, Inc., we provide new and remanufactured pumps and pump packages to suit any project need or application.

We can supply bare pump units or fabricated pump packages; these fabrications can include suction and discharge piping manifolds, suction strainers, isolation valves, gauges and pipe connections—as well as the electrical panels, which can include speed controls, alarms, shutdown switches, meters, and monitoring devices. We also have laser alignment equipment available for field jobs, with trained staff to operate them. With a worldwide network of suppliers, the R.B. Mosher Pump Division beats competitors in delivery time.

With motors and other components in-stock, repairs are FAST.



CUSTOM PUMP PACKAGES

R.B. Mosher Co. routinely provides customers with custom designed packages. These packages include all of the features needed for the unit to function according to customer specifications. No further handling or modification is required. We can deliver a complete, fully functional and tested unit for your application.

PROCESS PUMP PACKAGES

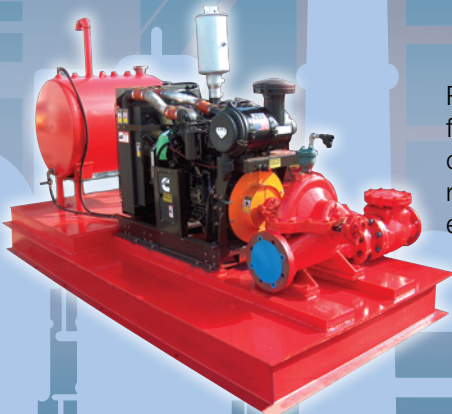
R.B. Mosher Co. is capable of producing a wide variety of Process Pump Units—all of which are available on a common base with the pump, motor, coupling, and guard. These units can include isolation valves and manifold piping, strainers, gauges, meters, electrical panels and required wiring. We can customize your unit to meet your requirements.



FIRE PUMP PACKAGES

R.B. Mosher Co. provides a wide variety of fire pump packages. We can specifically design a package to a customer's exact requirements. We can supply diesel or electric units, housed or open, with either NFPA-20 piping manifolds or bare pumps with no piping.

For Pump Packaging, Think of Us!



MOSHERFLO ANSI PUMPS

ANSI, REVERSE VANE IMPELLER PROCESS PUMPS

The Mosherflo-D is built to ANSI B731.1M.

It offers as standard:

- Reverse Vane Impellers
- Bearing Isolators
- Solid or Sleeved Shafts
- Selection of Seal Chambers

Mosherflo-D Series

The Mosherflo-D Series can utilize any of your existing Durco or Summit Pump company parts' inventory. Our pump is built to ANSI B73.1M, and is available in most metallurgies—in some cases, even Titanium. Our large inventory allows for fast turns—especially on Carbon Steel, 316SS or Cd4MCu, our largest sellers.



ANSI, OPEN IMPELLER PROCESS PUMPS

The Mosherflo-G is built to ANSI B731.1M.

It offers as standard:

- Open Impellers
- Bearing Isolators
- Solid or Sleeved Shafts
- Selection of Seal Chambers

Mosherflo-G Series

The Mosherflo-G Series can utilize any of your existing Goulds, Griswold, or Summit parts' inventory. Our pump is built to ANSI B73.1M, and is available in most metallurgies—in some cases, even Titanium. Our large inventory allows for fast turns—especially on Carbon Steel, 316SS or Cd4MCu, our largest sellers.

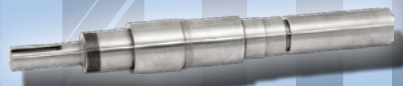
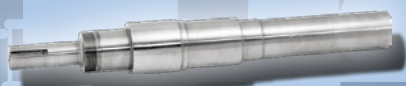
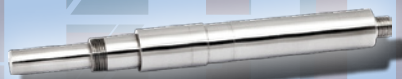
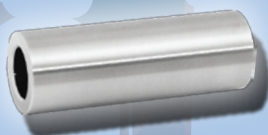
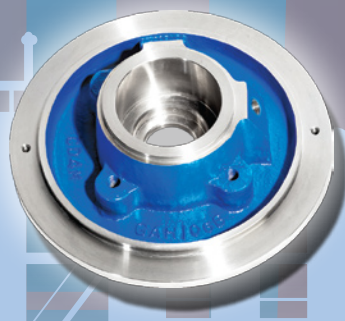
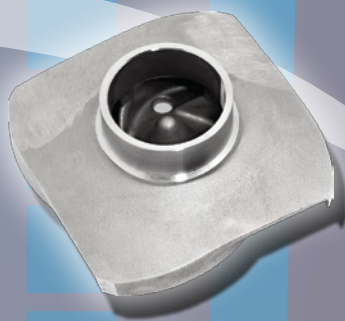




MOSHERFLO ANSI PUMPS



Pump Parts: Economical, Quality, Affordable



MOSHERFLO SELF-PRIMING PUMPS

The MOSHERFLO SPT & SPU Ranges of Pumps:

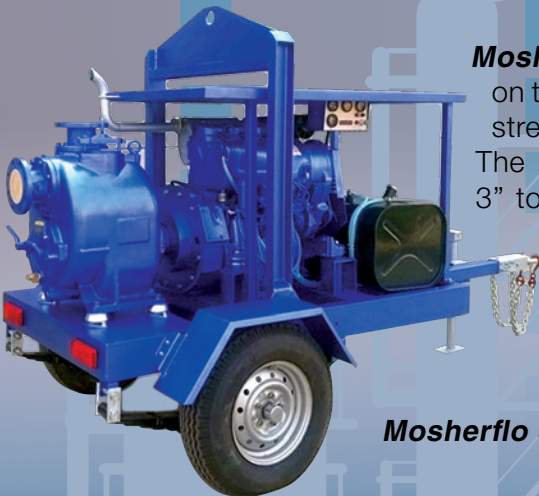
The Mosherflo SPT & SPU ranges of pumps are a direct performance and parts interchangeable match to the Gorman-Rupp T and Super-T pump ranges. All shafts are supplied in 17-4 PH or better material in all metallurgies; this extends shaft life and increases the shaft power ratings. All pumps are supplied with jack bolts for the inspection cover. Seals are semi-cartridge TC vs. TC, as standard. All pumps have double lip seals between the bearing lubricant and the seal chamber with separate sight gauges. The SPU pump is a direct cross to the U-Series from Gorman-Rupp and has the same construction features.

SELF-PRIMING TRASH PUMPS

Mosherflo SPT pumps are Self-Priming Trash Pumps, which are ideally suited for industrial and municipal solids-handling applications, where large or stringy solids may be present. The SPT typically can handle 1.75" solids with the 2" pump and 3" with the larger sizes, from 4" to 12".



Mosherflo SPT



Mosherflo SPU

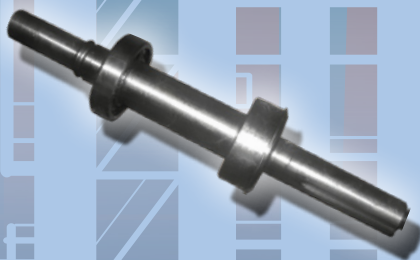
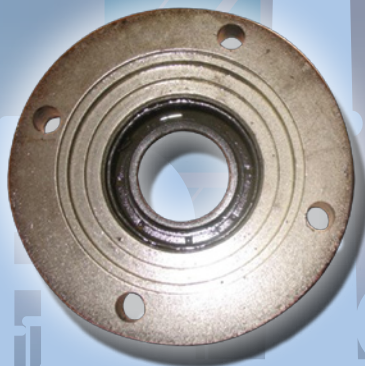
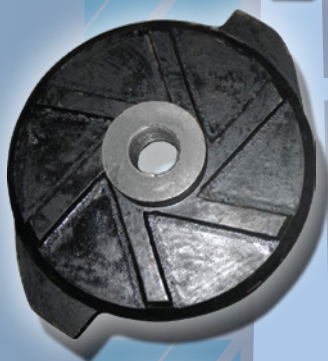
Mosherflo SPU pumps are designed on the same principal, but for cleaner streams at much higher pressures. The SPU ranges from 13/16" at the 3" to 1-1/4" with the 6" pump. This range is more suited to mine de-watering and general transfer applications, where solids handling is not much of an issue.



MOSHERFLO SELF-PRIMING PUMPS



Pump Parts: Economical, Quality, Affordable



R. B. Mosher Company offers your company a unique way of solving your filtration needs, without the high cost of purchasing. Whether your job requires a week, month, or a year-long filtration program, we can accommodate your needs.

Our vessels will handle your flow rates from **100 GPM to over 2200 GPM**. Vessel housings are available in Carbon or Stainless Steel, ASME Code or Non Code, depending on your requirements.

R .B. Mosher Company has the capability of duplexing large or small filter housings. Our **Duplex Filtration Systems** provide the flexibility and highest filtration quality that your process may require—available in bag vessel or cartridge vessel designs; separately valved units operate independently; providing continuous service during media changes. Concurrent operation of both housings doubles the flow rate capacity of a single vessel.

For your convenience, we stock filter bags from **one to 300 microns—and cartridge filters from 1/2 to 125 microns**, all at competitive prices.



Why R.B. Mosher Filter Rentals?



- ***Saves Money on Up-Front & Costly Purchasing***
- ***Immediate Availability***
- ***Competitive Rental Rates***
- ***Bag or Cartridge Filters***
- ***Stainless or Carbon Steel***
- ***Duplex Filters***
- ***Over 100 Filter Vessels in Our Fleet***

For an up-to-date list of our Filter Vessels, please visit our website, www.rbmosherco.com, and click on the link to the Filter Catalog.

BASKET & Y-STRAINERS

R.B. Mosher Co., Inc. carries a huge inventory of Y and Basket Strainers—ranging in size from ¼” to 14”, in Cast-Iron, Bronze and Stainless Steel. Most are available for immediate delivery.

- Exclusive distributor for **ALTA STRAINERS** in the United States.
- Distributor for **TITAN STRAINERS**
- Stocking distributor for **MOSHERFLO DUPLEX BASKET STRAINERS**
- We carry a large inventory of these strainers, along with other brands such as: **MUELLER, HAYWARD, ARMSTRONG, SPIRAX SARCO.**

ALTA STRAINERS

ALTA strainers are of high quality with a heavy-duty design; are stocked in both Carbon and Stainless Steel in a wide variety of sizes and pressures; and are available in screwed, socketweld, or flanged ends. All strainers come with material test reports, and ALTA strainers are individually hydrostatically tested to ANSI B16.5.

ALTA Y-Strainers



- These strainers feature a machined seat in the body to hold screen securely.
- The cover has a machined retainer cup to align screen during installation and retain sediment when cover is removed.
- These features mean no more misaligned screens in your strainer to allow bypass. Also, when changing or cleaning the screen, it is easily replaced.
- The body is machined to hold cover gasket in a blowout proof design.

ALTA Basket Strainers

With ALTA basket strainers, there is the option of either the convenient quick-opening lid—which allows easy cover removal and requires no tools—or the less expensive bolted lid.



BASKET & Y-STRAINERS

Titan strainers are stocked in Cast Iron, Bronze, Carbon and Stainless Steel in a wide variety of sizes and pressures. These strainers are available in screwed, socketweld, or flanged ends. All products manufactured by Titan FCI are 100% hydrostatically tested in accordance with applicable ANSI, MSS standards and customer specifications.

TITAN STRAINERS



Titan Y-Strainer

- Sizes 1/4" - 24"
- Pressure Classes 125-2500
- Standard Materials
- Exotic Materials
- All Types of End Connections

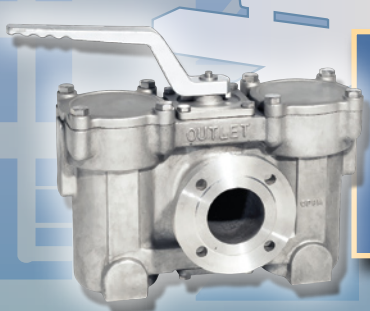
Titan Basket Strainer



With Titan Basket Strainers, there is the option of either the convenient quick-opening lid—which allows easy cover removal and requires no tools—or the less expensive bolted lid.

MOSHERFLO DUPLEX BASKET STRAINERS

For applications that require continuous flow with minimal pressure loss, the Mosherflo Duplex Basket Strainer provides the perfect solution in a quality design—one that features a simple changeover operation.



- Sizes 3/4" to 6" in stock
- Available in Cast Iron, Carbon Steel, and 316 Stainless Steel
- Available in Threaded or Flanged Ends
- Most are rated for 150 PSI (some available in 300 PSI)

CUSTOM SCREENS

R.B. Mosher Co. Manufactures Screens for Almost Any Y or Basket Strainer!

- Almost any perforation or mesh is available.
- We make screens for Y-strainers in 1 to 2 days!
- We make screens for Basket Strainers in 1 to 3 days!

Carbon Steel Temporary Cone Strainers



Stainless Steel Cylindrical Screens



FABRICATED STRAINERS

Basket and Y Type through 24"

We also supply:

- Inline strainers
- Tee strainers
- Cone strainers
- Flat strainers
- Figure 8's
- Paddle blinds

Fabricated Carbon Steel Vertical Basket Strainer



Fabricated Carbon Steel WYE Y-strainer



STEAM TRAPS

Distributor for **Pennant International** - Thermodynamic, Float & Thermostatic, and Inverted Bucket Steam Traps. Other brands also in stock!

- Our inventory of steam traps is extensive, and we carry a variety of brands such as **SPIRAX SARCO, ARMSTRONG, YARWAY, HOFFMAN**, and others.
- Many are in stock and ready for immediate delivery.

Call us first for your steam trap needs, because we usually have them in stock, at a great price, and available for same day shipping!

PENNANT STEAM TRAPS

We are proud to be an authorized distributor for **PENNANT STEAM PRODUCTS!**

PENNANT is an ISO Certified Company that has been manufacturing Steam Traps since 1987. They are recognized as a fail-proof manufacturer of high-quality products. Pennant carries a full line of steam traps and other steam specialties.



MOSHERFLO BUTTERFLY VALVES

Stocking Distributor for MOSHERFLO RESILIENT-SEATED BUTTERFLY VALVES.



- Sizes 3" through 12" in stock
- Available in Wafer or Lug Style
- Buna Seats in all sizes (Viton seat optional in 4")
 - Rated for 200 psi Bi-directional Service
 - Available with Short or Extended Neck
 - Alignment Holes / Notches for easy installation
 - We also supply Pneumatic and Electric Actuation



WE ALSO STOCK:

BALL VALVES

- Bronze, Carbon and Stainless Steel
- 1/4" - 10" sizes available from major manufacturers

CHECK VALVES

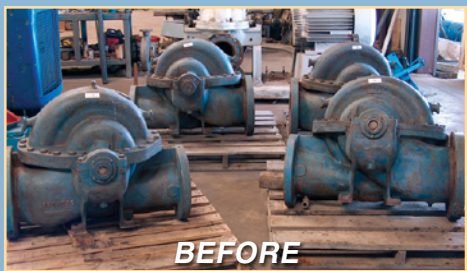
- Distributor for Titan & Pennant Wafer Checks: Cast Iron, Carbon, and Stainless Steel

ACTUATORS

- Double-Acting, Spring-Return, and Electric
- Valve Automation available upon request
- OSCAF Pneumatic Actuators

REMANUFACTURED PUMP PACKAGES

Pumps are brought back to OEM specifications, and are supplied on-time and under budget for many applications.



BEFORE



AFTER



CONTACT US!

For more information on these products, or any of our other products, let one of our sales representatives assist you. We are available to help you by phone or e-mail, Monday thru Friday 8 a.m. to 5 p.m CST. You can also visit our website for our recently updated Pump, Filter, Steam Trap, and Strainer Catalogs, along with our general inventory list of Ball Valves, Actuators, Mounting Kits, etc. If you are looking for a product that is not on any of our lists, call us anyway, since we are always adding to our inventory. We look forward to hearing from you soon.

-R.B.M Staff

(281) 339-3382 • Toll Free: 1-800-444-2207 • Fax: (281) 559-1152
Web Page: www.rbmosherco.com • E-mail: sales@rbmosherco.com

Disclaimer: Goulds is a trademark of ITT. Summit is a Trademark of Summit. Griswold is a Trademark of Wilden. Peerless is a Trademark of Grundfos. Durco is a Trademark of Flowserve. Gorman-Rupp is Trademark of Gorman-Rupp.



R.B. MOSHER CO.

www.rbmosherco.com

5902 FM 517 San Leon, TX 77539

Toll Free: 1-800-444-2207

Office: (281) 339-3382

Fax: (281) 559-1152

E-mail: sales@rbmosherco.com