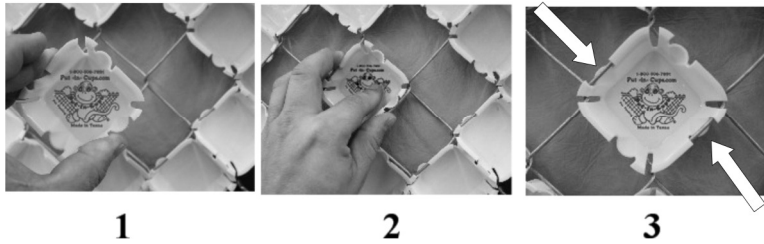


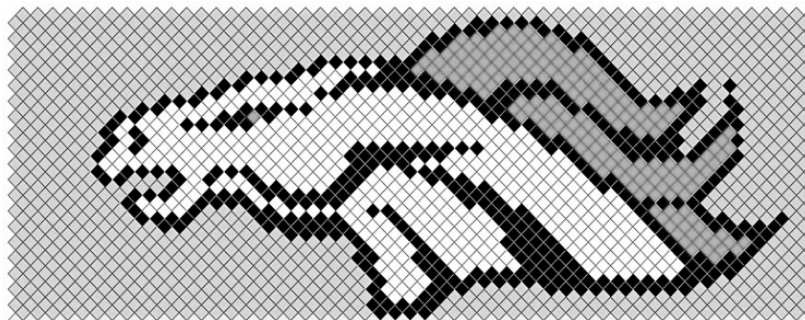
### How do you install them?

The cup locks into the fence only on two sides the top left and bottom right of the cup. There are four locking tabs on a cup; this allows you to install the cup any direction.

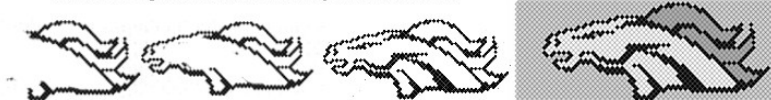


### **Which side of the cup should be the viewing side?**

Put-in-Cups look great from both sides, we recommend the concaved side with the monkey logo to be the side you want facing the public. Here are our reasons why you should install them this way. \* From this side you do not have to install your letters backwards.\* The fence support poles are normally on the inside of the fence and do not *interfere* with the installation when installing from the outside in. \* When installed from the front the cups completely hide the wires on the fence, and they tend to catch more light and sparkle when you drive past. Which gets even more attention.



start at the top and outline all the way then fill in color



For designs start at the top and outline the main color then fill in the rest

- A Put-in-Cup will fit into bent or misshaped fence due to lawn equipment and other objects, but I've seen some fence that require a little attention with some pliers to open up the diamond shapes. So it's a good idea to check the fence where your design is going to be before you start. You might have to move it left or to the right a few feet to miss the really damaged area. This will save you time on the installation.
- Put-In-Cups become more flexible the warmer the outside temperature is, So if you are installing in the winter time, on sunny days lay out the sleeves of cups ahead of time, this will allow the cups to soak up the sun they will be more flexible for easier installation.
- I recommend using String knit gloves that have latex-coated palm and fingertips, for the larger



jobs it keeps you hands nicked from the fence.

For a couple of dollars, your.