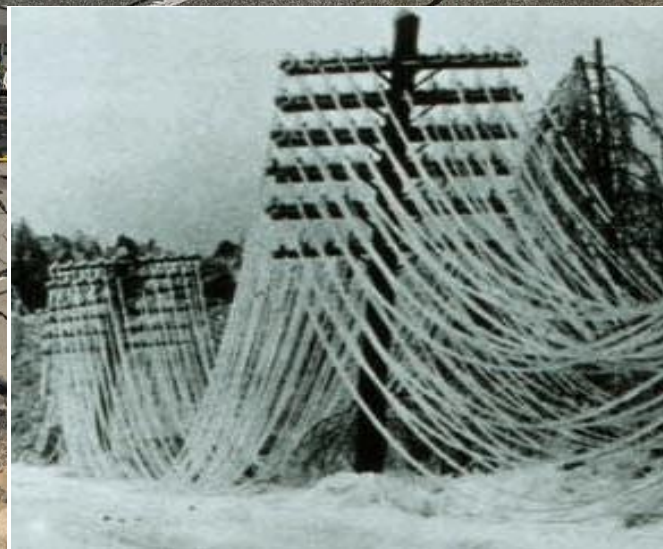
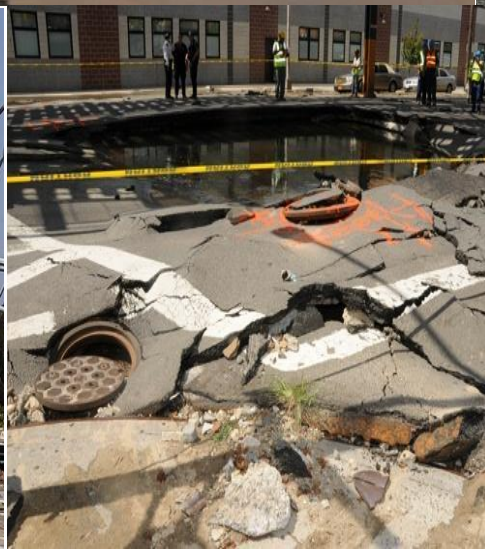




**CORECENTRIX**





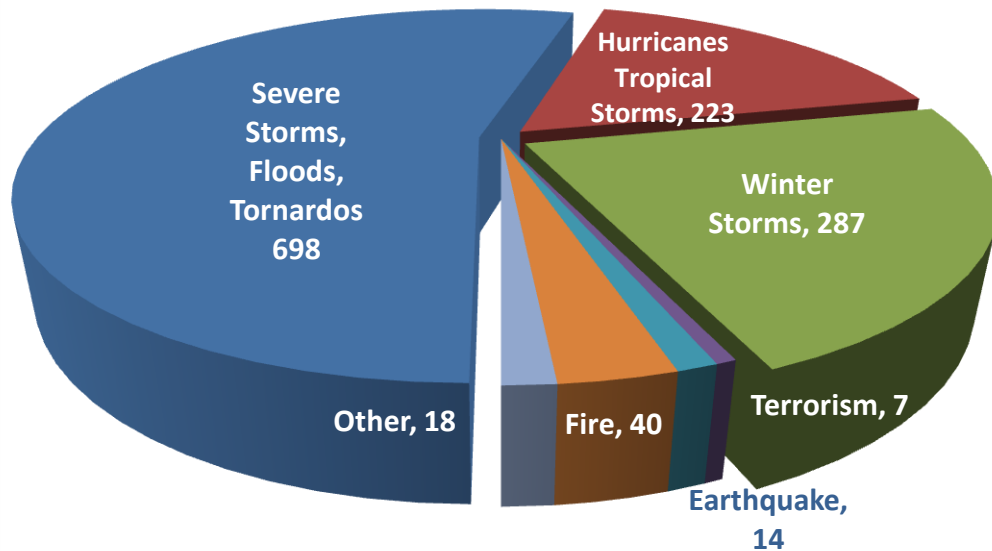




*What would it take to separate you from  
your Office ... your Data ... your Customer*

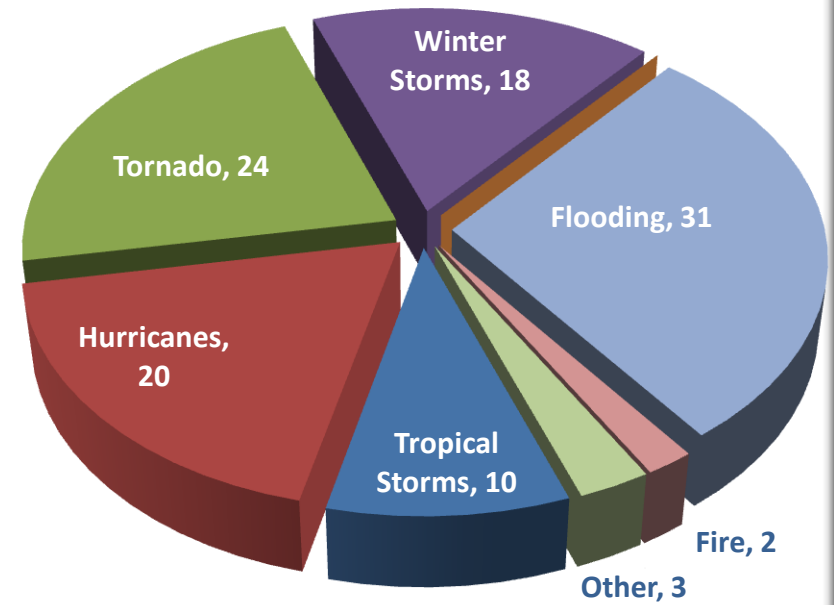


*There's a new word in Disaster Recovery*  
*It's ... REALITY*



**Number of FEMA Declarations  
1991-2010**

**Total 1287**



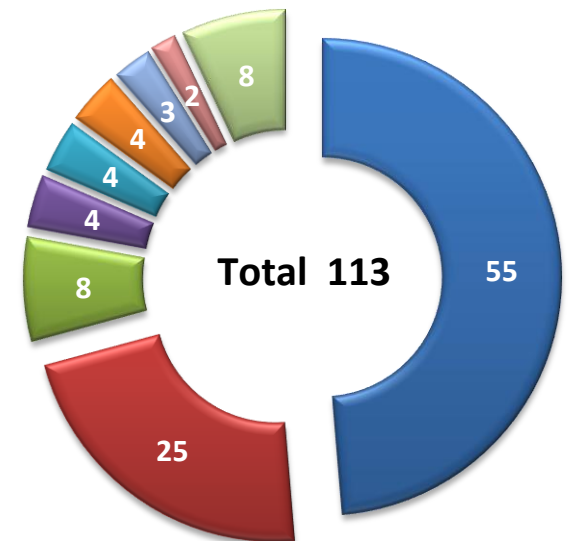
**Number of FEMA Declarations  
First 9 Months 2011**

**Total 108**

**Projected 2011**  
declared natural disasters  
*Estimated at 225% of the average  
historical trend of events*

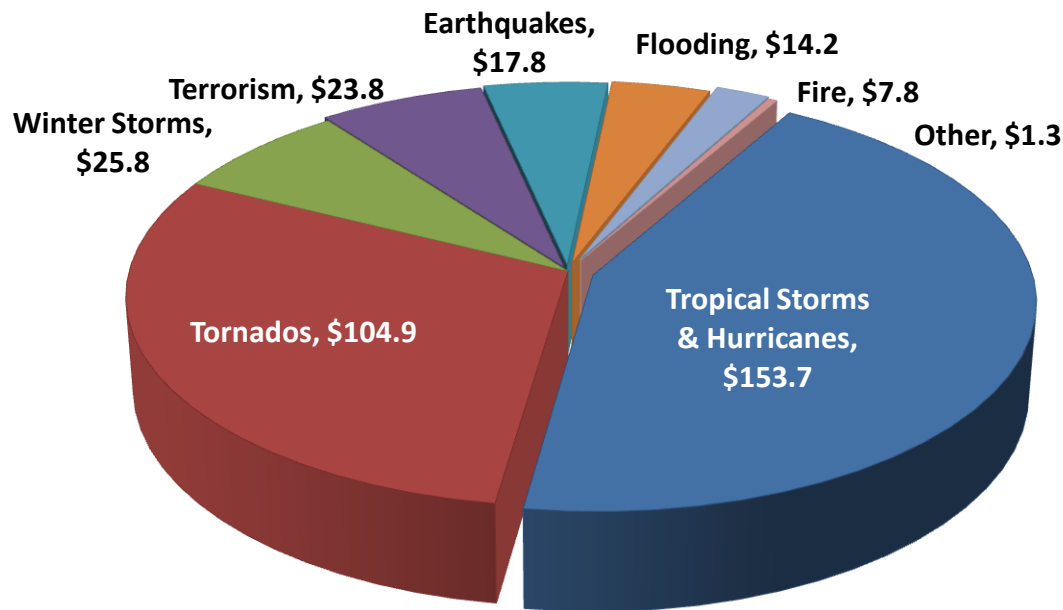
- @ Predictability of events to geography unreliable
- @ Tsunami warnings on the west coast
- @ Earthquakes on the east coast
- @ Hurricanes all the way to New York
- @ FFIEC requires preparation for impact from uncontrolled and non-specific events

- Texas
- Oklahoma
- New Mexico
- Georgia
- California
- Arizona
- Colorado
- Virginia
- 8 Other States 1 Each



**Fire Assistance Declarations  
First 9 Months 2011**

**Total 113**



Dollars in Billions  
Overall Losses from Disasters  
1991 - 2010

Over the past 20 years  
losses from disasters  
have exceeded  
**\$349 billion**

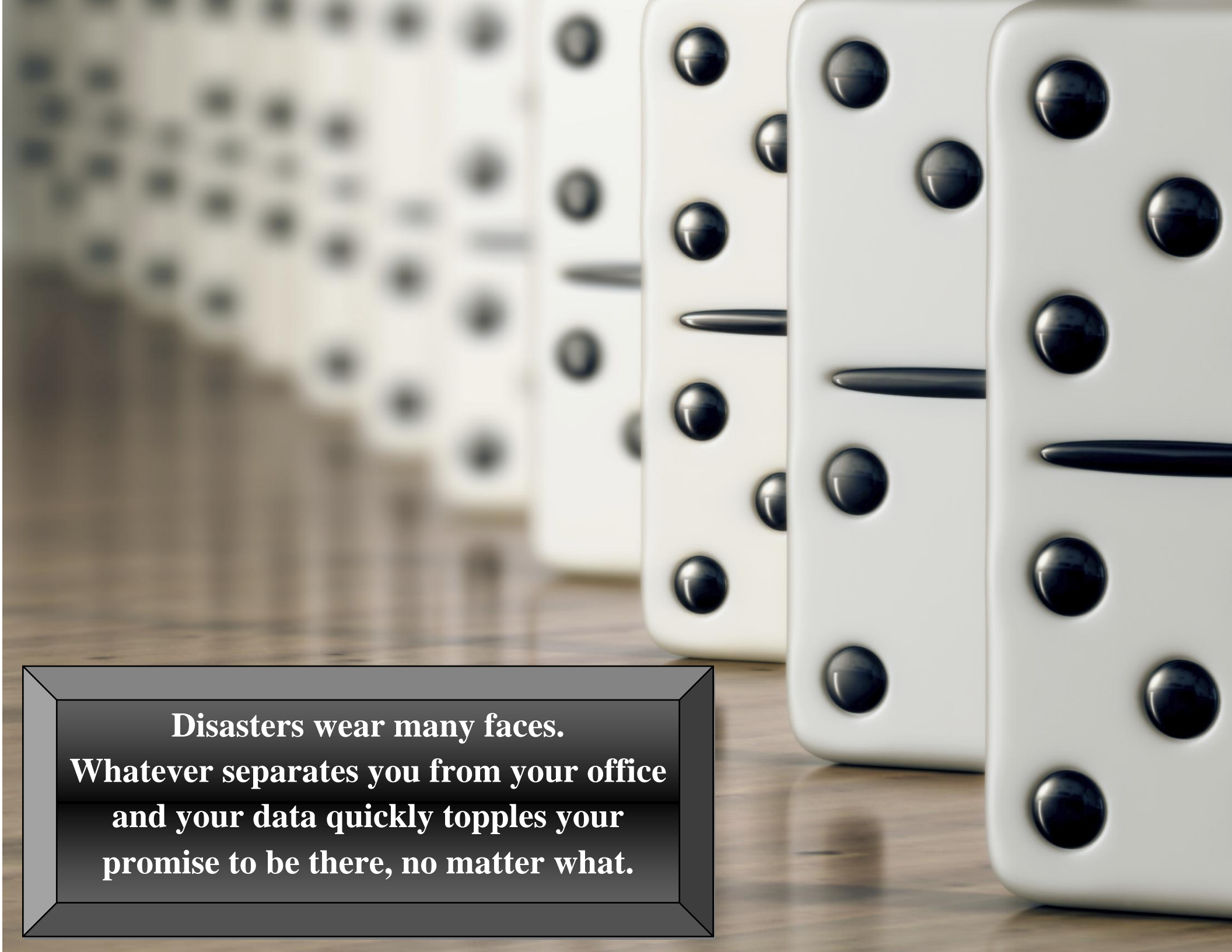
First Half of 2011  
losses are **\$18 billion**  
*twice the average  
historical trend*



## Business Continuity Cannot Be a Game of Chance

- Ⓢ Companies that are not able to resume operations within 10 days of a disaster are not likely to survive... (Strategic Research Institute)
- Ⓢ 43% of businesses never resume operations following a major fire, another 35% are out of business in 3 years ... (US National Fire Protection Agency)
- Ⓢ FFIEC requires development of the means to reduce the impact and risk of losing IT support for business critical applications.
- Ⓢ If mission critical services cannot be provided within 48 hours, what is your reputation risk, financial risk and future existence?





**Disasters wear many faces.  
Whatever separates you from your office  
and your data quickly topples your  
promise to be there, no matter what.**

# When Fiduciary Failure is *NOT* an Option

**Customer Business Fails**

**Banks Fails Customer**

**Cannot talk to Customers**

**No Telephones \* No Emails**

**Leadership Disconnected**

**Nowhere for Employees**

**No Cash Deliveries**

**No Wire Transfers**

**No Deposits Processed**

**No Loans Made or Paid**

**No Trial Balance**

**No G.L. Update**

**Information Vacuum**

**No Core Processor Access**

**No Offsite Data Access**

**No Internet**

**Computers Gone**

**Servers Inoperable**

## **Mission Critical Services**

Regulatory agencies recognize the devastating impact to your fiduciary obligation to your customers and have mandated comprehensive risk assessment and *proof* of readiness. Are you truly ready to restore your *critical* services within 48 hours or sooner? *You have the “storing” part mastered, but what about the “restoring part”?*





## The CORE Solution

The most unique offering in Business Continuity designed and delivered exclusively for the financial industry. The **CORE Package** is an *“all inclusive”* Disaster Recovery solution. *“Our House”* Hot Site Center dedicated to the restoration of mission critical services from data restoration to daily operations; **AND** *“Your House”* temporary office space on your home base or in your neighborhood. Ready with the best solution at the moment when you need it most.







# Our House

The Core **Disaster Recovery Hot Site** is fully equipped and readied to become “your house” when a disaster is declared. Designed in crisis management mode and dedicated to the restoration of the mission critical services for the financial industry. Decades of banking and technology experience; we know your priorities and how to realistically achieve them. Partners when you are most vulnerable.

## Reality Restoration

- @ Core Processor Connectivity
- @ Wire Transfer Tokens
- @ Wire Transfer Processing
- @ Dual Custody Control
- @ Forms, Policies, Procedures
- @ Security Codes & Fobs
- @ Cashiers & Interest Checks
- @ Accounts Payable Processing
- @ General Ledger Update
- @ Laser Pro or Loan Doc System
- @ Draw Loan Docs
- @ Process Loan Payments
- @ Scan and Process Deposits
- @ NOC for IT Staff
- @ Technology Environment
- @ Telephone Redirection
- @ Email Restoration
- @ Customer Communication



## Command Center

- @ Executive command center for strategic directives
- @ Multiple comfortable conferencing rooms with wireless access
- @ Work stations & Disaster Kits for key operations personnel
- @ Residence Inns, Casual and Fine dining within Core compound

## Tier III Level Data Center

- @ Multiple redundancies for Power, Telecommunications, Environmental and Fire Suppression
- @ Internet restoration for email, phone, and communication
- @ Optional full data recovery services and testing
- @ Selected co-location opportunities



# Your House

If your disaster or outage is localized, the best solution to restore your mission critical services may be temporary office space on **your home base or in your neighborhood**. Your Core partnership stands ready to deploy modular solutions or acquire emergency office space for you. You worry about your customers, let us set up your recovery house.



## Modular Offices

- @ 400-1500 sq ft with plumbing and HVAC, prewired for voice & data
- @ Open area and private office floor plans suitable for customer service
- @ Short term or extended term rental arrangements
- @ Furniture packages customized to your specific use and needs
- @ Power via portable generator of various configurations



## Communications

- @ Internet link for email and phone
- @ Cloud connectivity for core processing and data recovery
- @ Computer & office equipment based on selected options
- @ Delivery of your stored recovery documents



## Commercial Office Space

- @ When a modular office is not permitted or doesn't fit your corporate image, the Core Package will find you a new short term space
- @ Strategic partnerships with leading national leasing agencies
- @ Furniture, computers, office equipment and connectivity
- @ Delivery of your custody controlled recovery documents, policies and security access







# The *Core Package*

One Low Monthly Fee that includes both

## *Our House*

## *Your House*



- @ Tier III Level Data Center Hot Site
- @ Multiple redundancy for Telecom & Power
- @ Technology environment for IT staff
- @ Fully readied NOC & equipment
- @ Pay affordable flat daily fee at declaration

- @ Redundant Internet connectivity
- @ Phone redirection & email access
- @ Satellite communication for core & cloud
- @ Optional restoration & testing of data
- @ Select Co-Location opportunities

- @ Dual control repository for recovery records
- @ External drive storage of forms & policies
- @ Wire Transfer codes/fobs & capability
- @ Draw loan documents & make payments
- @ Remote Deposit Capture Processing

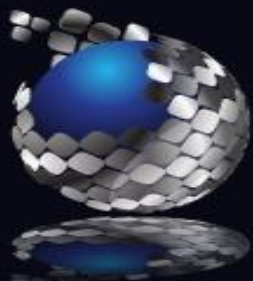
- @ Multiple comfortable conferencing rooms
- @ Executive command center with wireless
- @ Key work stations & equipment readied
- @ Disaster kits for all onsite employees
- @ Walking distance hotels, food, supplies
- @ Onsite bankers and technology partners

- @ Modular Offices on your home base
- @ Power from mobile generators
- @ Temporary Office in your neighborhood
- @ Computers & equipment delivered
- @ Pay actual cost of services at declaration

- @ Internet connectivity
- @ Phone redirection & email access
- @ Satellite communication to CORE site
- @ Optional restoration of back up data
- @ Data recovery dependent on preparedness

- @ Dual control repository for recovery records stored offsite & forwarded to “your house” at declaration
- @ Daily operations restored dependent on technology selections & preparedness

- @ Office and customer areas in modular
- @ Emergency or traditional furniture
- @ Modular close to employees & customers
- @ Temporary office in local neighborhood
- @ Optional disaster kits on your site and/or shipped by Core at declaration



1260 Corona Pointe Court  
Suite 204  
Corona, CA 92879

Toll free (855) THE CORE  
Phone (855) 843-2673  
Web [corecentrix.com](http://corecentrix.com)