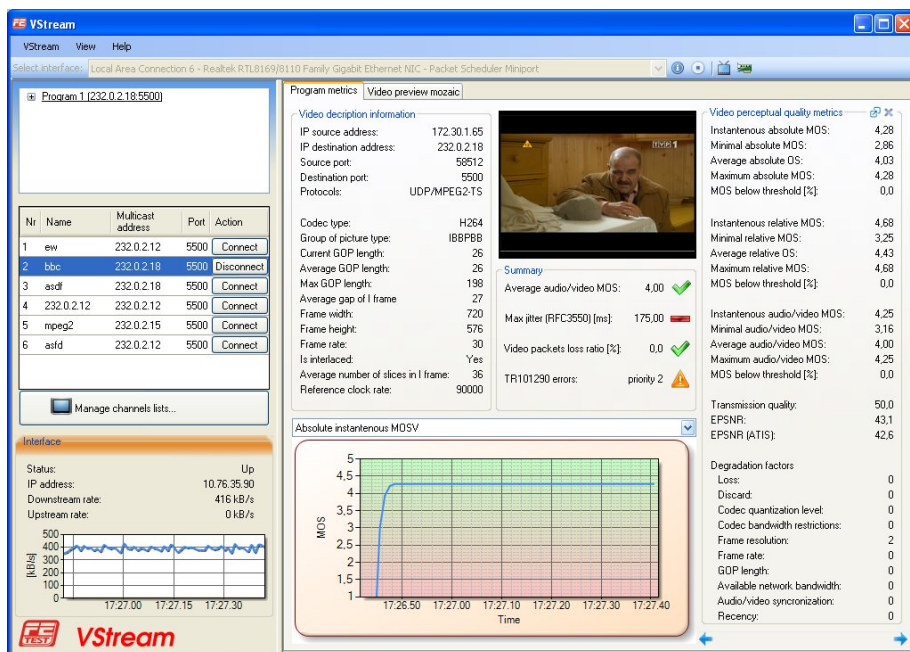


VStream Analyzer

*The most affordable way to qualify, maintain
and troubleshoot IPTV circuits.*



Main Features

- Automatically tests all channels and indicates pass/fail results.
- Complete Set Top Box (STB) emulation.
- Full Motion Picture video preview of all analyzed IPTV streams.
- Simultaneously analyzes multiple IPTV streams.
- Accurate audio and video MOS score.
- Comprehensive Video and Transport Stream statistics.
- Advanced Video Perceptual Quality Metrics.
- Operates with Windows XP/Vista/7.

Frederick Engineering, Inc.
832 Oregon Avenue, Suite M
Linthicum, MD 21090



Phone: 410-789-7890
Fax: 410-789-7670
e-Mail: fe@fetest.com

www.fetest.com

Specifications

Physical Layers Supported -

10/100/1000 Ethernet, Wi-Fi 802.11 b/g/n.

Recognized Video Compression Standards

MPEG2, MPEG4 part 2&10 (H.264).

Signaling Protocols -

IGMP v 2

STB Emulation -

PID channel list & multicast address
Channel name
Channel auto scan
Active stream source and destination addresses
Video codec
Stream content (PID with bitstream)
IGMP latency (ZAP time)
Video preview (live full frame)
Simultaneous multiple streams operation

Video Description Information -

IP source address
IP destination address
Source port
Destination port
Protocols
Codec type
Group of picture type
Current GOP length
Average GOP length
Max GOP length
Average gap of I frame
Frame width
Frame height
Frame rate
Is interlaced
Average number of slices in I frame
Reference clock rate

Transport Packets Metrics -

Packets received
Lost
Discarded
Corrected
Out of sequence
Duplicated
Lost %
Corrected %
Discarded %
Out of sequence %
Duplicated %
Burst count
Burst loss rate
Average burst length [pkts]
Gap count
Gaps loss rate
Average gap length [pkts]

Video Perceptual Quality Metrics -

Instantaneous absolute MOS
Minimal absolute MOS
Average absolute MOS
Maximum absolute MOS
Instantaneous relative MOS
Minimal relative MOS
Average relative MOS
Maximum relative MOS
Instantaneous audio/video MOS
Minimal audio/video MOS
Average audio/video MOS
Maximum audio/video MOS
Transmission quality:
EPSNR
EPSNR(ATIS)
Degradation Factors:
Lost
Discarded
Codec quantization level
Codec bandwidth restrictions
Frame resolution
Frame rate
GOP length
Available network bandwidth
Audio/video synchronization
Recency

Audio Description Information-

IP source address
IP destination address
Source port
Destination port
Type
Transport protocol
Codec Type
Number of channels
Reference clock

Audio Perceptual Quality Metrics -

Minimal MOS
Average MOS
Maximum MOS
Instantaneous MOS
Degradation factors
Lost
Discarded
Codec
Recency

MPEG2-TS TR101290 Priority 2 -

Last errors
Transport error count
CRC error count
PCR error count
PCR repetition error count
PCR discontinuity error count
PCR accuracy error count
PTS error count

CAT error count

MPEG2-TS TR101290 Priority 1 -

Last errors
TS sync loss count
Sync byte error count
PAT error count
PAT2 error count
Continuity error count
PMT error count
PMT2 error count
PID error count

RTP Packets Metrics (Carrying MPEG2-TS)

Packets received
Corrected
Lost
Discarded
Out of sequence
Duplicated
With timestamp errors

Video Jitter -

Frame inter arrival jitter
I frame inter arrival jitter
Average frame arrival delay
Peak frame arrival delay

Video Scene Analysis Metrics -

Instantaneous detail level
Instantaneous motion level
Instantaneous panning level
Static image proportion
High detail proportion
Low detail proportion
High panning proportion
Low panning proportion
High motion proportion
Low motion proportion

Jitter Metrics (RFC3550) -

Packet to packet delay variation
Max packet to packet delay variation

LAN Port

Interface
Status
Type
Speed
Support multicast
Details
Physical address
IP address
Subnet mask
Default Gateway
DNS server
IPv4 statistics
Received and Sent
Bytes
Packets
Unicast packets
Packets with errors
Packets discarded
Non unicast packets

Frederick Engineering, Inc.
832 Oregon Avenue, Suite M
Linthicum, MD 21090



www.fetest.com

Phone: 410-789-7890
Fax: 410-789-7670
e-Mail: fe@fetest.com